



SHRI GURU NANAK H/S PUBLIC SCHOOL, RUDRAPUR  
WINTER HOLIDAYS HOMEWORK 2024-25

NAME - \_\_\_\_\_

CLASS - VII SEC. \_\_\_\_\_

**ENGLISH**

- Q1. Write a paragraph on the Sports Meet held in your school recently and express your experience and ideas with the help of Facebook post of our School.
- Q2. Write an application to the Principal for five days leave, as you are sick. (3 times)
- Q3. Learn the verb forms (50) and write them in your English Language notebook.
- Q4. Learn Chapter 6 and 7. (An Alien Hand)
- Q5. Make a beautiful New Year card for your grandparents and write a few lines expressing your love and affection for them.

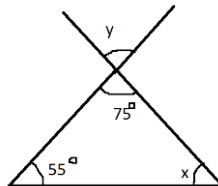
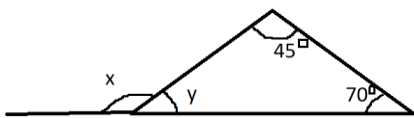
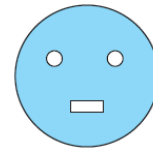
**हिंदी**

1. अपने विद्यालय की ओर से भ्रमण पर जाना तथा उसके महत्त्व का वर्णन करते हुए मित्र को 100 शब्दों में पत्र लिखिए।
2. 'पर्यावरण संरक्षण' और 'जल संरक्षण' विषय पर पिता और पुत्र के मध्य संवाद लगभग 80 शब्दों में लिखिए।
3. 'स्वच्छता अभियान' विषय पर आकर्षक एवं सचित्र विज्ञापन तैयार कीजिए।
4. अपने विद्यालय में प्रार्थना सभा में होने वाली गतिविधियों के बारे में संक्षिप्त अनुच्छेद लिखिए।
5. अपनी पाठ्य पुस्तक तक में मुहावरों के अर्थ 41 से 60 तक लिखिए और याद करें। पेज नंबर - 153.

नोट- सारा कार्य हिन्दी व्याकरण कार्यपुस्तिका में करे।

**MATHS**

1. The radius of a circular pipe is 20cm. What length of a tape is required to wrap on the pipe once? ( $\pi = 3.14$ )
2. On a circular cardsheet of radius 21cm, two circles of radius 7 cm and the rectangle of length 4 cm and 3 cm are removed as shown in adjoining figure. Find the area of remaining sheet. ( $\pi = 22/7$ ).
3. Juhi sells a washing machine for Rs. 14,500. She loses 30% in bargain.  
What was the price at which she bought it?
4. Sunita takes a loan of Rs. 6,000 at 20% per year as rate of interest.  
Find the interest she has to pay at the end of 2 years.
5. List 5 rational numbers between  $\frac{-5}{7}$  and  $\frac{-3}{5}$ .
6. (a) Find the value of  $\frac{-135}{30} \div (\frac{-425}{150})$   
(b) Find L.C.M. : (i) 7, 8, 14, and 21 (ii) 126 and 162  
(c) Find H.C.F. : (i) 16, 24, 36 and 54 (ii) 84 and 144
7. Find the perimeter of rectangle whose length is 40cm, and one diagonal 41 cm.
8. Find the value of unknown x and y



9. Simplify combining like terms:  
p- (2p - 3q) - q - (q-p)
10. What should be added to  $2x^2 + 2xy + y^2$  to obtain  $3x^2 + 4xy$ .
11. Find the value of  $x^2 + 3x + 1$  when  $x = -2$
12. What should be the value of b if the value of  $3x^2 + x - b = 10$  when  $x=0$
13. Find (a) 20% of 1650 (b) 40% of 1 litre
14. Find the ratio (a) Rs 10 and 75 paise (b) 20 days to 48 hours
15. Express each of following numbers using exponential notation (a) 432 (b) 1000

**SCIENCE**

1. Rishabh came back home after winning a long race. His legs were aching. He practiced deep breathing that gave him relief from pain. Why?
2. Draw a diagram of the human excretory system and label the various parts.
3. Name the instrument used to measure blood pressure.
4. Why do mountaineers carry oxygen cylinders with them?

5. Assertion reason based question:

- (a) Both A and R are true and R is the correct explanation of A
- (b) Both A and R are true but R is not the correct explanation of A
- (c) A is true but R is false
- (d) A is false but R is true

Assertion: Yeast is a single cell organism that can respire anaerobically.

Reason: Yeast is used to produce wine and beer.

Assertion: When we breathe rapidly we inhale more oxygen.

Reason: When we inhale, air is passed through the nasal cavity.

6. Case study based question:

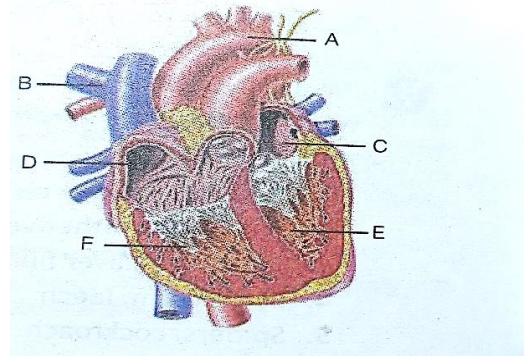
Blood is the fluid which flows in blood vessels. It transports substances like digested food from the small intestine to the other part of the body. It carries oxygen from the lungs to the cell of the body. It also transports waste for removal from the body. Blood is composed of a fluid, called Plasma in which different types of cells are suspended. One type of cell is the red blood cells(RBC) which contain red pigment called Hemoglobin. Hemoglobin binds with oxygen and transports it to all the parts of the body and ultimately to all the cells. It will be difficult to provide oxygen efficiently to all the cells of the body without hemoglobin. The presence of hemoglobin makes blood appear red.

Que a) What role does blood play in the body?

Que b) How is oxygen transported in the body?

Que c) What makes blood appear red in color?

7. Do label all different parts of the heart.



### SOCIAL SCIENCE

1. How was the administration of gonds different from the administration of ahoms?
2. Throw the light on the major features of tribal societies.
3. What were the causes of the fall of Mughal Empire in mid 18th century?
4. Discuss the different layers of atmosphere.
5. What is air pressure? Discuss about low pressure and high pressure.
6. Discuss the different types of ocean currents and their causes.
7. What are the expectations from men and women in our society?
8. Discuss about the experience of Rashundari Devi. What is the impact of her autobiography on the lives of different women?
9. In what ways does the media play an important role in a democracy?
10. "Writing a balanced report, however depends on the media is being independent". Explain
11. **Copy the extract, answer the following questions.**

**What does TV do to us and what can we do with TV? In many of our homes. TV is on for a very long time. In many ways a lot of our impressions about the world around us are formed by what we see on TV it is like a window on the world. How do you think it influences us? TV has different types of programmes, soap operas like Saas Bhi Kabhi Bahu Thi, game shows, like Kaun Banega Crorepati, reality TV shows like Big Boss, news, sports and cartoons. Before, in between and after each programme are advertisements. Since, TV time costs so much money, only those programmes that can attract the maximum number of viewers are shown. Can you think of what such programmes might be? Think of what are the kinds of things that TV shows and what it does not? Does it show us more about the lives of the rich or the poor? We need to think about what TV does to us, how it shapes our views of the world, our beliefs, attitudes and values. We need to realise that it gives us a partial view of the world. While we enjoy our favourite programmes, we should always be aware of the large exciting world beyond our TV screens. There is so much happening out there that TV ignores. A world beyond film stars, celebrities and rich lifestyles, a world that all of us need to reach out to and respond to in various ways. We need to be active viewers, who question whatever we see and hear, while we may enjoy it too!**

(a) What does TV do to us?

(b) Do television programmes show us all the happenings around the world?

(c) Discuss how does television affect our lives?

**Note** – Homework of all the subjects must be done in the respective subject notebook. It is mandatory to complete the holiday homework.